

Normally, the alarm equipment has the big power. So we suggest user adopt the individual power supply. The alarm parameters of our products are as follows:  
DVR7024:120V/AC 24V/DC.  
The excessive power may damage your mainboard.

### 8.Password Reset

When you forget the system password or the admin's password, the factory's default setting can be retrieved by the following operation.  
Shut off machine and cut off the power supply. The operations are as follows:  
1. Unload the cover screw, and remove the case lid from the machine.  
2. Find J1 pin on the back of the front panel beside the clock chip (Back of the IR indicator).  
3. Jump the thread piece to put the legs 1, 2(next to the resistance R79) of J1 to the status of short circuit. (The thread piece is put on the legs 2,3 when leave factory).  
4. Connect the power supply, and start the machine. You can hear buzzer sounds, and it indicates that the passwords have been set to the default value at the moment.  
5. Shut off the machine again, and cut off the machine power supply.  
6. Pull out the jumping thread piece, and let the legs 2,3 of J1 to the status of open circuit, and then insert the jumper cap in the legs 2,3.  
7. Place back the case lid. Then you finish the delete password operation.

## Digital Video Recorder

# Fast Operation Guide

### ★ Main Functions

- Support network time checking,the system support 26 time zones for setting.
- Support SMTP and Email linkage.
- Support spot sequence output.
- Support fast CD/DVD burner.
- Support real time playback and digital zoom.
- Support all channels sequence output.
- Support output VGA and BNC(CVBS) at the same time.
- Support four record mode:manual,schedule,motion and alarm.
- Support pre-record and record duration.
- Support all channels playback.Support inquiring files by accurate time and record mode.Can display or hide the player when playback.
- Support 2 way voice-chat,support passive and active MIC.
- Max support 4 mask areas of each channel.
- Support PTZ,serial keyboard and transparent controlling.
- Support DDNS,PPPOE and auto connect function.
- Remote set para.,update,preview,VOC and backup the DVR recording file.
- Support Web Server function.

### 1.Equipment Installation

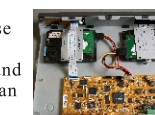
#### 1.1 Steps of Hard Disk Installation

Steps of installing hard disk on DVR7000 series DVR:

- 1.Use a screwdriver to open the case cover, you will see the fixed hard drive plywood.The positive side of splint install thin hard disk, the negative side install thick hard disk.
- 2.Fix the plywood with HDD to the chassis (Hard metal surface must touch to chassis bottom), connect the HDD data cable and HDD power cable.
- 3.Cover box lid, and cover with screws.

Notes:please purchsse HDD from formal channel to get the quality assurance. This series DVR don't support the HDD hot swap, please connect the data and power cable of HDD before you turn on DVR.User should format the HDD before you use the record function.During long-distance transportation,please detach the HDD to avoid damaging it.

Instructions:This series DVR can be controlled by mouse,remote controller and front panel. The mouse operation is as follows,and it's just an example,user can refer to user manual to get more details of remoter controller and front panel operation.



#### 1.2 System Start/Shutdown,Login

(1) Starting system

After power on,if the power indication lamp on the front panel is red,please press the power button on front panel to enter the running state,if the power lamp on front panel turn green,it means the system is started successfully.

Notes:if the power indication lamp on front panel is off, please check and connect the power line to DVR and turn on it, then the DVR will start.

(2) System shutdown

In the login status, right click the mouse to pop up the rapid menu, choose the shutdown item and refer to the indications to shutdown the DVR; you can also press the power button on remote controller or front panel, then system will pop up the shutdown indication interface, click confirm to shutdown DVR.

Notes:if you shutdown system in this method, you just need to press the power button on remote controller or front panel when restart DVR.

(3) System login

The default user name is admin , password is 888888,and system default in lock status when you first entering. Click mouse and it will pop up the login interface. Input correct user name and password then you can login successfully.The lock marker in the lower left corner will switch to login marker too, then user can do the operations.

Notes:all operations just can be carried on in the login status.

#### 1.3 Keystroke Unlock/Lock

When multi DVRs are put to work together, using the remote controller may influence the machines which users do not intend to control. So, we set system key lock function correspond to remote control. Under the system management of DVR main menu, please enter series configuration and setup device number, then enable key lock and save it. Now to press the "Server Index" button on the remote controller and input a different device number,the DVR is locked.To unlock the DVR ,please press the "Server Index" button and input the corresponding DVR device number(Device number range is 0-99,default set is 1).

Note:if the remote controller does not respond, please check if this function is enabled.

#### 2.General Mouse Operation

- 1.Right click mouse in the playback interface to enable or quit playback player.
- 2.In the record setup interface, dragging the left mouse to setting deployment period, double right click mouse to cancel it.
- 3.Click "go" marker to exit or display currently menu.

#### 4. Digital zoom

Steps of entering digital zoom:

A. When in the preview status, right click mouse and choose digital zoom item;

B. When in playback status, entering single channel playback directly.

Digital zoom operation: click mouse wheel to start setting, left click mouse to select start point, then move to the end point and click again. Dragging any border to enlarge the selected area. Double click to cancel, right click to quit the digital-zoom.

#### 5. Software keyboard

A. Left click mouse to enable software keyboard and right click to quit.

B. Some special function of software keyboard:

[En]: switch the No. input status to pinying

←: delete

Caps: switch to capital status

### 3. Remote Controller Brief Operation

1. Click "menu" to switch menu level.

2. Click up and down to select on main menu.

3. Click left and right to switch on sub menu.

4. The way to shield live image: Click remote controller to enter mask area interface. It will display a red block after cursor moved. Select a start point and move to end point. It will display yellow mask area.

Note: The PTZ functions only available when there is the PTZ icon on the image.

### 4. Record and Playback Functions

#### 4.1 Four Record Modes

This series DVR support pre-record and delay-record function, you should set the pre-record and record duration period before using the record function. All record modes support pre-record but just motion and sensor record support delay-record. Click "main menu"→"record setup"→"record parameter" to enable these function

##### Manual Record

1. Enable manual record function: after login system, there are some rapid operation menus on the lower left corner of screen, click "manual" to enter manual setup interface.

2. The button will turn yellow when the corresponding channel was selected to recording, otherwise the button is grey.

After setting the manual record, recording won't stop unless the manual record is cancelled. You should click "save" to active the setting after you choose manual record channel.

##### Schedule Record

1. "Main menu"→"record setup"→"schedule".

2. User can set several deployment periods of each day.

3. The time must be multiple of 15min. Such as time period 1 00:00-08:47, after setup will be 00:00-09:00.

##### Motion

1. "Main menu"→"alarm setup"→"motion".

2. Deployment period setting is the same as item 2,3 of schedule record.

3. The sensitivity of the motion detection is adjustable (1-5), and 5 is the highest sensitivity level.

4. User can set several motion detection areas. System default yellow area is detection area and grey area will not be detected.

5. Support 4 channel alarm output, yellow means "on", grey means "off".

6. Email linkage, system will auto upload the alarm information to the target Email address when alarm appears.

##### Alarm Record

1. "Main menu"→"alarm setup"→"sensor".

2. Sensor mode: normal on/off. Click "main menu"→"alarm setup"→"alarm output" to enter the setup interface.

3. Deployment period setting is the same as item 2,3 of schedule record.

4. Record linkage: The linkage record channel can record when alarming, we recommend that each channel correspond with each sensor, so that we can find the alarm record files by channel, the yellow

channel button means have linkage alarm record, gray means not linkage to any alarm record. You can also set several linkage channels.

5. Recall PTZ preset point: PTZ will turn to the preset point when alarm triggered.

6. Email linkage, system will auto upload the alarm information to the target Email address when alarm appears.

Notes: User can distinguish different record mode by the record indication lamp color: manual (green); schedule (blue); motion (yellow); alarm (red), different lamp color also indicates different alarm types: sensor alarm (red); motion alarm (yellow); video lost alarm (blue).

#### 4.2 Alarm Output

Alarm output setup: "main menu"→"alarm setup"→"alarm output".

Function: alarm type (normal on/off), Alarm to full-screen, Alarm to Buzzer, Audio Alarm, Alarm output Time

(default is 30s, range is 2-300s), Alarm output deployment time.

#### 4.3 Two Playback Mode

Accurate time search playback: Click twice "playback" on remote controller or click "record playback" by mouse. Click yellow magnifier icon to call the accurate playback menu.

File search playback: Click "playback" on remote controller three times or click "record playback" by mouse to call file search playback menu.

### 5. Backup

#### 5.1 Local Backup

Support two backup ways: 1. USB backup; 2. CD/DVD burner backup.

The backup disk must be FAT32 and capacity is bigger than 512M.

Insert U disk to the USB interface on the back panel, after driver installation you can inquire the capacity of U disk in the system management interface.

Support backup record data and local inquiry/playback.

User can name the host to differ it from other hosts (Note: the host name couldn't be Chinese).



#### 5.2 Remote Backup

1. Backup record files through client manager software via network.

2. Backup record files through windows IE browser, the default HTTP port is 81. For IE browser, input as the following mode: http://IP:81, and click ENTER to connect DVR.

### 6. PTZ Setup

The steps of PTZ control:

"Main menu"→"COM setup" to set the parameters: COM type, COM device, baudrate.

Enter the "PTZ Setup" interface to set protocol and address code (The default PTZ address code is coincide with every channel, for instance, the first channel's PTZ address code is 1).

Switch the channel to single picture display status, press the "PTZ" key on the remote controller to get in the PTZ control mode, then you can use the remote controller to control the PTZ, press "PTZ" again you can quit the PTZ control mode; You can also right click the mouse to get in the PTZ control interface.

Setting and calling preset point by the remote controller or front panel: Enter the PTZ status, press the direction button make the PTZ turn the direction which you want to set as preset point, press "preset" button on remote controller and input the No. of the preset point in the box (such as 001), then turn the PTZ to another direction, if you press the "#call" button and input the No. (001) which you preset to the box, the PTZ will turn to the 001 preset point automatically.

Setting and calling preset point by mouse: Enter the PTZ status, double left click mouse at the preset input box to enable the software-keyboard and input the preset No. (such as 001). Right click mouse to quit software-keyboard, then click "preset" to active the setup. To call preset point, the steps is the same as remote controller.

Notes: the protocol, baudrate and address code must be the same with the PTZ itself.

### 7. Alarm Connection

Alarm input: Input resistance: 22KΩ, window contrast voltage (3.0V-4.18V).

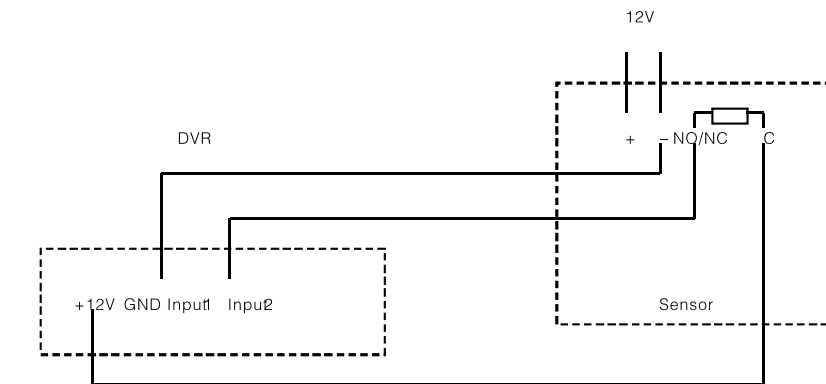
(Note: There will be alarm when the voltage between 0V-3V or 4.18V-12V, and no alarm when the voltage between 3V-4.18V).

Alarm output: relay (240VAC/7A, 125VAC/10A, 28VDC/10A), Normal (relay open), Alarm output (relay close).

Sensor power: The machine provides a +12V DC power output port.

Alarm input: The physical connections of the normal on/off mode are the same. And user can select normal on/off mode in the software. Typical alarm connection: The sensor power supply is provided by DVR. The fig is as follows:

The sensor need to have individual power supply if there is a long distance between DVR and sensor.



It's best to connect the ground line of each side together.

If we parallel connected the sensor, the DVR can not recognize the triggered sensor. User need to have a resistance to achieve this function.

